

PRELIMINARY TECHNICAL INFORMATION

HIGHLIGHTS

- Fiabilidad a largo plazo / Long term reliability
- Capacidad de sobrecarga / Overload capacity
- Plazo de entrega reducido / Short delivery time
- Bajo coste / Low cost
- Listo para usar / Ready to use

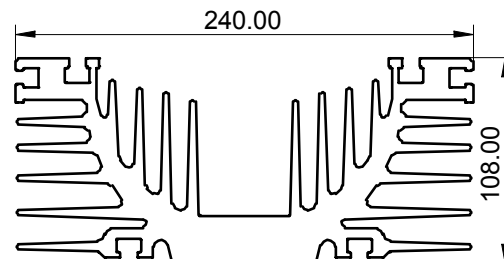
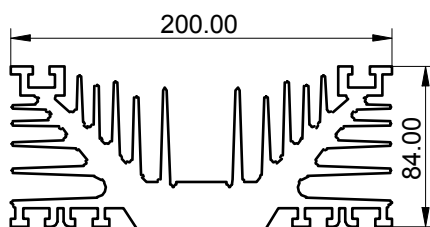
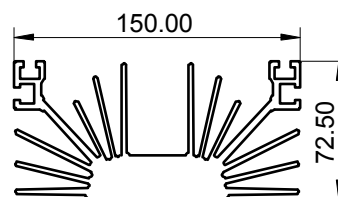
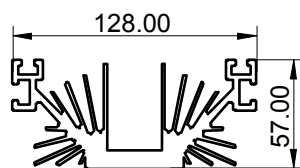


Photo non-contractual

CARACTERISTICAS GENERALES / GENERAL CHARACTERISTICS

- Disipadores anodizados en negro para refrigeración natural, y sin tratamiento para ventilación forzada./ Black anodized heatsinks for natural cooling, non anodized aluminium for forced cooling.
- Superficie de contacto fresada./ Mechanized contact surface.
- Opcion con RC encapsuladas./ Encapsulated RC option.
- Opción varistor incluida dentro de la RC encapsulada./ Varistor option included into RC capsule.
- Opción termostato tipo 110°C (diodos) y 90°C (tiristores) NC fast-on 6.3 mm./ Thermostat option type 110°C (diodes) and 90°C (thyristors) NC fast-on 6.3 mm.

DISIPADORES ESTANDAR / STANDARD HEATSINKS



081027 Rev.:1

RECTIFICADORES GUASCH, S.A.

Ciutat de Granada, 80
08005 BARCELONA
SPAIN

Se reserva el derecho de cambiar los límites, las condiciones de prueba y dimensiones indicadas en esta hoja sin previo aviso.
Reserves the right to change limits, test conditions and dimensions given in this data sheet at any time without previous notice.

Tel.: +34 93 309 88 91
Fax.: +34 93 300 18 41
e-mail: info@e-guasch.com
www.e-guasch.com

RECOMENDACIONES DE MONTAJE / MOUNTING RECOMMENDATIONS

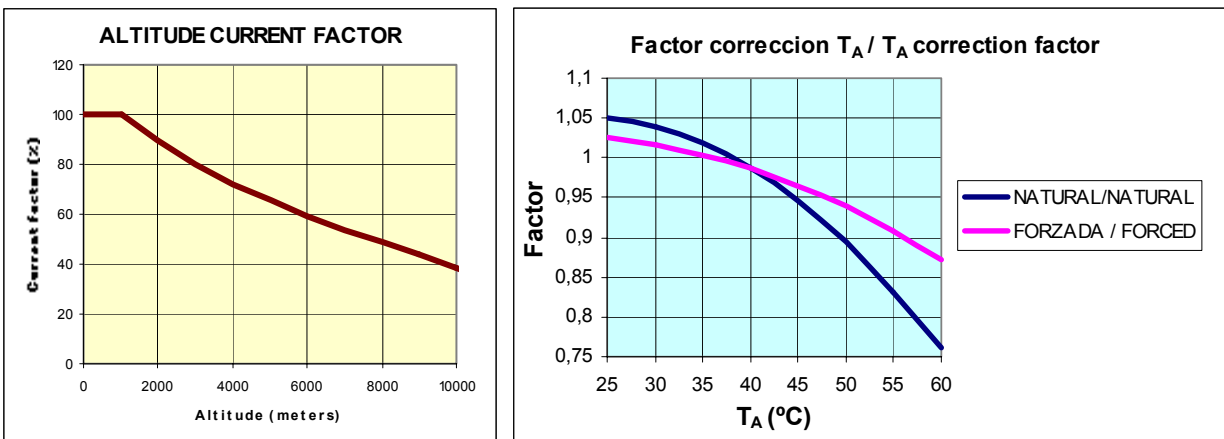
-En el caso de aplicación con refrigeración natural, la posición del disipador debe ser vertical, asegurando una adecuada ventilación. / In case of natural cooling assemblies should be placed with the fins in vertical position, ensure that there is adequate ventilation.

-En el caso de refrigeración forzada la posición de montaje es indiferente, siempre que se asegure una entrada y salida de aire suficiente. / For forced cooling, the mountig position is indifferent, whenever free air circulation be guaranteed.

-Evitar fuentes de calor cercanas al montaje / Avoid heat sources near the assembly.

-En el caso de montajes con tiristores, nunca deben soldarse directamente los terminales de puerta y cátodo, utilizar terminales apropiados / In case of thyritors assemblies, never weld directly gate an cathode terminals, use appropriate fast-on terminals.

FACTORES DE CORRECCION / CORRECTION FACTORS



PERDIDAS DE DISIPACION (Aprox.) / POWER LOSSES (Aprox.)

| | DC | M1 | M2 | B2 | M3 | B6 | M6 | M3.2 | W1C |
|----------------------|---------------------|---------------------|----------------------|---------------------|----------------------|---------------------|----------------------|---------------------|----------------------|
| DIODO / DIODE | 0,8xI _{DC} | 1xI _{DC} | 1xI _{DC} | 2xI _{DC} | 1,25xI _{DC} | 2,5xI _{DC} | 1,25xI _{DC} | 1,5xI _{DC} | |
| TIRISTOR / THYRISTOR | | 1,2xI _{DC} | 1,25xI _{DC} | 2,5xI _{DC} | 1,5xI _{DC} | 3xI _{DC} | 1,4xI _{DC} | 1,6xI _{DC} | 1,3xI _{RMS} |

ORDER CODES

Code example: **RP - B6U 0350 N 12 RCVT**
 (1) (2) (3) (4) (5) (6)

- 1- Identificación de la serie (RP) / Series identification (RP)
- 2- Circuito de aplicación / Application circuit.
- 3- Intensidad nominal de trabajo / Nominal working current.
- 4- Refrigeración natural o forzada (N o F) / Natural or forced cooling (N or F)
- 5- Tensión inversa semiconductor V_{RRM}/100 / Semiconductor reverse voltage V_{RRM}/100
- 6- Opciones /Options

T: Termostato / Thermostat
 V: Varistor / Varistor
 RC: Red RC / Snnuber

RECTIFICADORES GUASCH, S.A.

Ciutat de Granada, 80
 08005 BARCELONA
 SPAIN

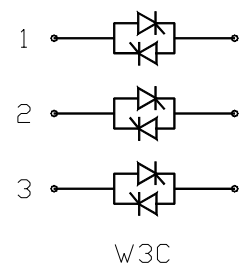
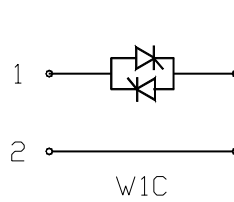
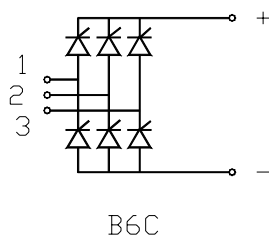
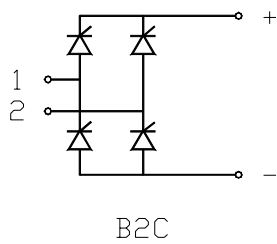
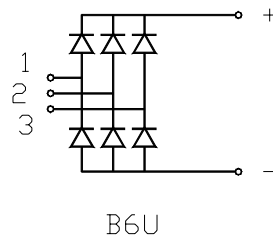
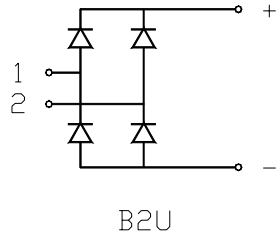
Se reserva el derecho de cambiar los límites, las condiciones de prueba y dimensiones indicadas en esta hoja sin previo aviso.
 Reserves the right to change limits, test conditions and dimensions given in this data sheet at any time without previous notice.

Tel.: +34 93 309 88 91
 Fax.: +34 93 300 18 41
 e-mail: info@e-guasch.com
 www.e-guasch.com

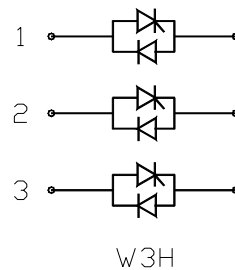
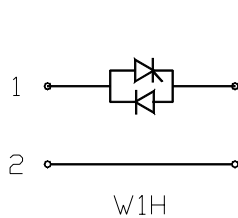
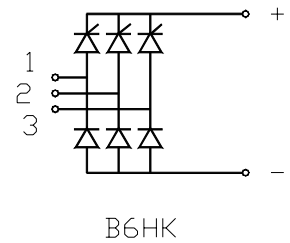
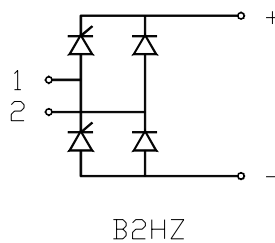
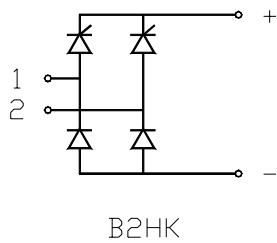
081027 Rev.:1

CIRCUITOS DE APLICACION SEGUN DIN41761 / APPLICATION CIRCUIT DIN41761

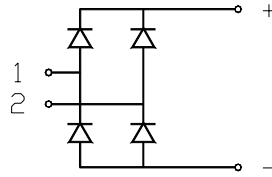
SERIE ESTANDAR / STANDARD SERIES:



OPCIONALES / OPTIONAL:



CIRCUITOS B2U / B2U CIRCUIT.



B2U

B2U SINGLE PHASE DIODE BRIDGES (NATURAL COOLING)

| REFERENCIA | I _{DC} (A) @ 45°C | I _{FSM} (*) | I ² t (*) | V _{RRM} | Dis./H.S. | Dim. |
|------------------|----------------------------|----------------------|------------------------|------------------|-------------|------|
| RP-B2U0400N12... | 400 | 5000 | 150kA ² s | 1200 | RG15168/150 | a |
| RP-B2U0600N12... | 600 | 9000 | 400kA ² s | | | b |
| RP-B2U0700N12... | 700 | 15000 | 1000kA ² s | | | c |
| RP-B2U0850N12... | 850 | 33000 | 5000kA ² s | | RG15720/300 | d |
| RP-B2U1200N12... | 1200 | | | | | |
| RP-B2U1500N06... | 1500 | 40000 | 8000kA ² s | 600 | RG15840/300 | e |
| RP-B2U1700N12... | 1700 | 33000 | 5000kA ² s | 1200 | | f |
| RP-B2U2000N06... | 2000 | 40000 | 8000kA ² s | 600 | | g |
| RP-B2U2300N12... | 2300 | 50000 | 14000kA ² s | 1200 | | |
| RP-B2U2500N12... | 2500 | 70000 | 25000kA ² s | | | |

(*) Aprox. Data

B2U SINGLE PHASE DIODE BRIDGES (FORCED COOLING 6m/s)

| REFERENCIA | I _{DC} (A) @ 35°C | I _{FSM} | I ² t | V _{RRM} | Dis./H.S. | Dim. |
|------------------|----------------------------|------------------|------------------------|------------------|-------------|-------------|
| RP-B2U0750F12... | 750 | 5000 | 150kA ² s | 1200 | RG15168/150 | a |
| RP-B2U1000F12... | 1000 | 9000 | 400kA ² s | | | b |
| RP-B2U1200F12... | 1200 | 15000 | 1000kA ² s | | | RG15560/200 |
| RP-B2U1400N12... | 1400 | | | | | |
| RP-B2U1900N12... | 1900 | 33000 | 5000kA ² s | | RG15720/300 | d |
| RP-B2U3000F12... | 3000 | 40000 | 8000kA ² s | 600 | | RG15840/300 |
| RP-B2U3600F06... | 3600 | | | | | |
| RP-B2U4000F06... | 4000 | | | | | |
| RP-B2U4600F12... | 4600 | 50000 | 14000kA ² s | 1200 | g | |
| RP-B2U4800F12... | 4800 | 70000 | 25000kA ² s | | | |

(*) Aprox. Data

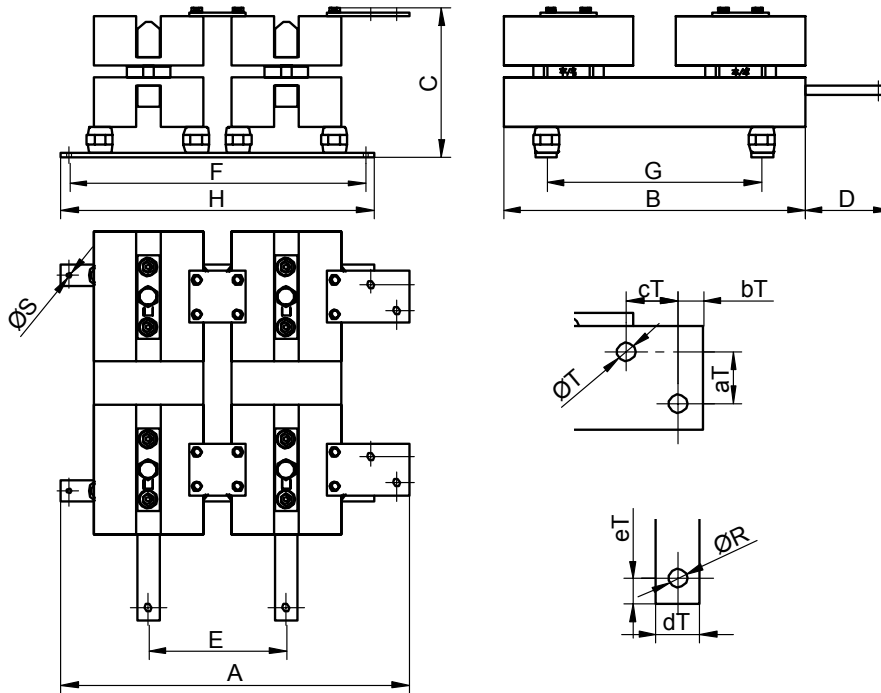
RECTIFICADORES GUASCH, S.A.

Ciutat de Granada, 80
08005 BARCELONA
SPAIN

Se reserva el derecho de cambiar los límites, las condiciones de prueba y dimensiones indicadas en esta hoja sin previo aviso.
Reserves the right to change limits, test conditions and dimensions given in this data sheet at any time without previous notice.

Tel.: +34 93 309 88 91
Fax.: +34 93 300 18 41
e-mail: info@e-guasch.com
www.e-guasch.com

DIMENSIONES / DIMENSIONS



DIMENSIONES MONTAJE / ASSEMBLY DIMENSIONS

| Dim. | A | B | C | D | E | F | G | H | ØS |
|------|-------|-----|-----|-----|-----|-----|-----|-----|-----|
| a | 414,5 | 350 | 175 | 100 | 150 | 354 | 250 | 374 | 6,2 |
| b | 414,5 | 350 | 186 | 100 | 150 | 354 | 250 | 374 | 6,2 |
| c | 448,5 | 450 | 216 | 100 | 182 | 388 | 400 | 408 | 9 |
| d | 562 | 650 | 244 | 100 | 232 | 482 | 500 | 512 | 9 |
| e | 692 | 650 | 292 | 150 | 272 | 582 | 500 | 612 | 11 |
| f | 692 | 650 | 305 | 150 | 272 | 582 | 500 | 612 | 11 |
| g | 692 | 650 | 310 | 150 | 272 | 582 | 500 | 612 | 11 |

TERMINALES / BUSSBARS

| Dim. | aT | bT | cT | dT | eT | ØT | ØR |
|------|----|----|----|----|----|----|----|
| a | 30 | 15 | 30 | 25 | 15 | 11 | 11 |
| b | 30 | 15 | 30 | 25 | 15 | 11 | 11 |
| c | 30 | 15 | 30 | 25 | 15 | 11 | 11 |
| d | 40 | 15 | 40 | 30 | 20 | 13 | 11 |
| e | 50 | 20 | 50 | 40 | 25 | 13 | 13 |
| f | 50 | 20 | 50 | 40 | 25 | 13 | 13 |
| g | 50 | 20 | 50 | 40 | 25 | 13 | 13 |

081027 Rev.:1

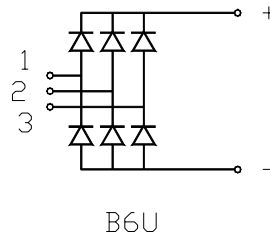
RECTIFICADORES GUASCH, S.A.

Ciutat de Granada, 80
08005 BARCELONA
SPAIN

Se reserva el derecho de cambiar los límites, las condiciones de prueba y dimensiones indicadas en esta hoja sin previo aviso.
Reserves the right to change limits, test conditions and dimensions given in this data sheet at any time without previous notice.

Tel.: +34 93 309 88 91
Fax.: +34 93 300 18 41
e-mail: info@e-guasch.com
www.e-guasch.com

CIRCUITOS B6U / B6U CIRCUIT.



B6U THREE PHASE DIODE BRIDGES (NATURAL COOLING)

| REFERENCIA | I _{DC} (A) @ 45°C | I _{FSM} (*) | I ² t (*) | V _{RRM} | Dis./H.S. | Dim. |
|------------------|----------------------------|----------------------|------------------------|------------------|-------------|------|
| RP-B6U0650N12... | 650 | 5000 | 150kA ² s | 1200 | RG15168/150 | a |
| RP-B6U0800N12... | 800 | 9000 | 400kA ² s | | | b |
| RP-B6U0900N12... | 900 | 15000 | 1000kA ² s | | RG15560/200 | c |
| RP-B6U1200N12... | 1200 | 33000 | 5000kA ² s | | | d |
| RP-B6U1700N12... | 1700 | | | 600 | RG15720/300 | |
| RP-B6U2000N06... | 2000 | 40000 | 8000kA ² s | 600 | RG15840/300 | e |
| RP-B6U2250N12... | 2250 | 33000 | 5000kA ² s | 1200 | | f |
| RP-B6U2800N06... | 2800 | 40000 | 8000kA ² s | 600 | | g |
| RP-B6U3250N12... | 3250 | 50000 | 14000kA ² s | 1200 | | |
| RP-B6U3600N12... | 3600 | 70000 | 25000kA ² s | | | |

(*) Aprox. Data

B6U THREE PHASE DIODE BRIDGES (FORCED COOLING 6m/s)

| REFERENCIA | I _{DC} (A) @ 35°C | I _{FSM} | I ² t | V _{RRM} | Dis./H.S. | Dim. |
|------------------|----------------------------|------------------|------------------------|------------------|-------------|------|
| RP-B6U1000F12... | 1000 | 5000 | 150kA ² s | 1200 | RG15168/150 | a |
| RP-B6U1400F12... | 1400 | 9000 | 400kA ² s | | | b |
| RP-B6U1500F12... | 1500 | 15000 | 1000kA ² s | | RG15560/200 | c |
| RP-B6U1750F12... | 1750 | | | | | d |
| RP-B6U2600F12... | 2600 | 33000 | 5000kA ² s | 600 | RG15720/300 | e |
| RP-B6U3700F12... | 3700 | | | | | f |
| RP-B6U4800F06... | 4800 | 40000 | 8000kA ² s | 600 | RG15840/300 | g |
| RP-B6U5300F06... | 5300 | 50000 | 14000kA ² s | 1200 | | |
| RP-B6U6200F12... | 6200 | | | | | |
| RP-B6U7500F12... | 7500 | 70000 | 25000kA ² s | | | |

(*) Aprox. Data

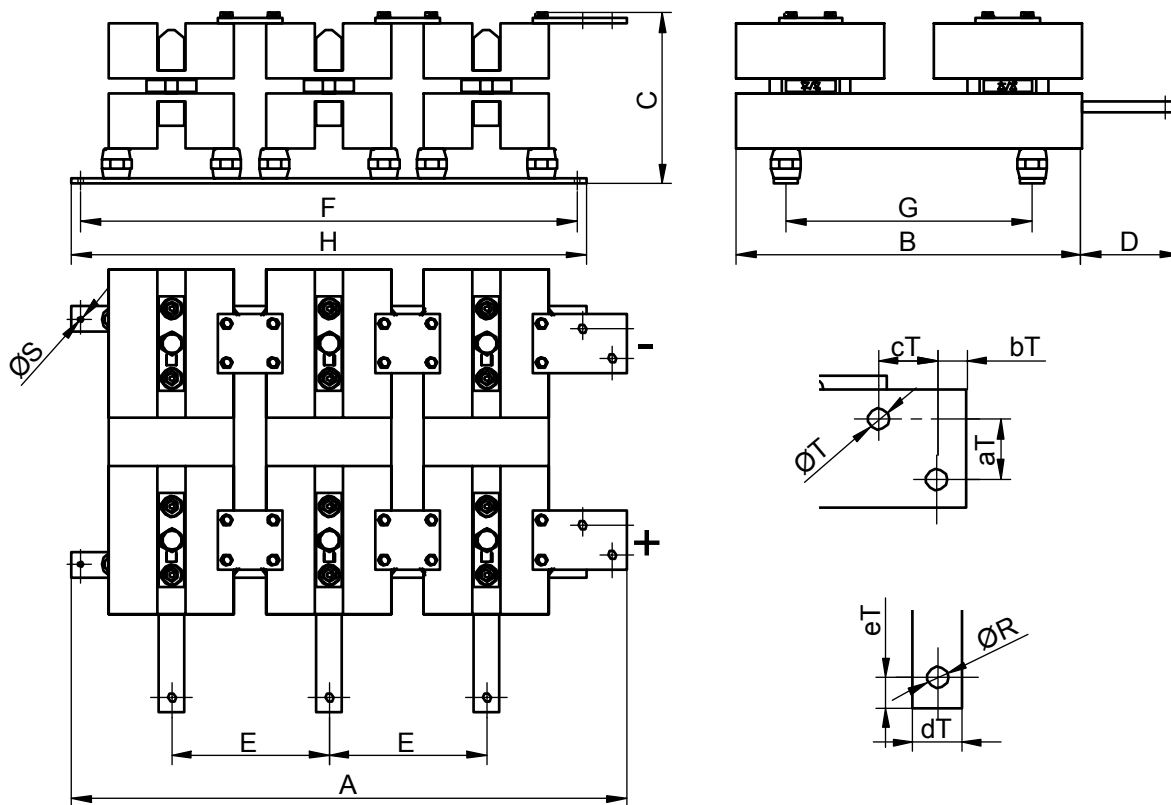
RECTIFICADORES GUASCH, S.A.

Ciutat de Granada, 80
08005 BARCELONA
SPAIN

Se reserva el derecho de cambiar los límites, las condiciones de prueba y dimensiones indicadas en esta hoja sin previo aviso.
Reserves the right to change limits, test conditions and dimensions given in this data sheet at any time without previous notice.

Tel.: +34 93 309 88 91
Fax.: +34 93 300 18 41
e-mail: info@e-guasch.com
www.e-guasch.com

DIMENSIONES / DIMENSIONS



DIMENSIONES MONTAJE / ASSEMBLY DIMENSIONS

| Dim. | A | B | C | D | E | F | G | H | ØS |
|------|-------|-----|-----|-----|-----|-----|-----|-----|-----|
| a | 564,5 | 350 | 175 | 100 | 150 | 504 | 250 | 524 | 6,2 |
| b | 564,5 | 350 | 186 | 100 | 150 | 504 | 250 | 524 | 6,2 |
| c | 630,5 | 450 | 216 | 100 | 182 | 570 | 400 | 590 | 9 |
| d | 794 | 650 | 244 | 100 | 232 | 714 | 500 | 744 | 9 |
| e | 964 | 650 | 292 | 150 | 272 | 854 | 500 | 884 | 11 |
| f | 964 | 650 | 305 | 150 | 272 | 854 | 500 | 884 | 11 |
| g | 964 | 650 | 310 | 150 | 272 | 854 | 500 | 884 | 11 |

TERMINALES / BUSSBARS

| Dim. | aT | bT | cT | dT | eT | ØT | ØR |
|------|----|----|----|----|----|----|----|
| a | 30 | 15 | 30 | 25 | 15 | 11 | 11 |
| b | 30 | 15 | 30 | 25 | 15 | 11 | 11 |
| c | 30 | 15 | 30 | 25 | 15 | 11 | 11 |
| d | 40 | 15 | 40 | 30 | 20 | 13 | 11 |
| e | 50 | 20 | 50 | 40 | 25 | 13 | 13 |
| f | 50 | 20 | 50 | 40 | 25 | 13 | 13 |
| g | 50 | 20 | 50 | 40 | 25 | 13 | 13 |

081027 Rev.:1

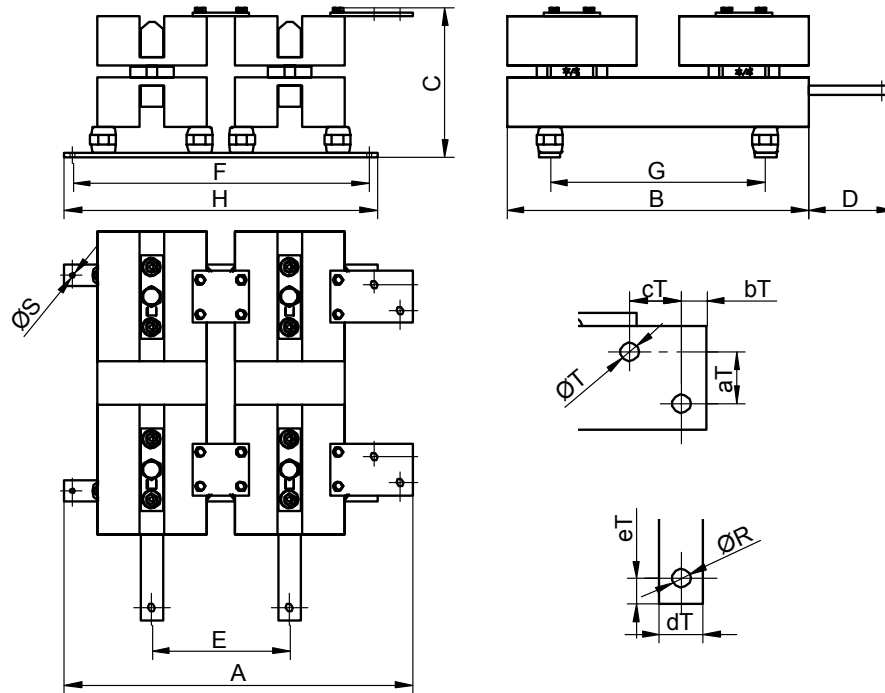
RECTIFICADORES GUASCH, S.A.

Ciutat de Granada, 80
08005 BARCELONA
SPAIN

Se reserva el derecho de cambiar los límites, las condiciones de prueba y dimensiones indicadas en esta hoja sin previo aviso.
Reserves the right to change limits, test conditions and dimensions given in this data sheet at any time without previous notice.

Tel.: +34 93 309 88 91
Fax.: +34 93 300 18 41
e-mail: info@e-guasch.com
www.e-guasch.com

DIMENSIONES / DIMENSIONS



DIMENSIONES MONTAJE / ASSEMBLY DIMENSIONS

| Dim. | A | B | C | D | E | F | G | H | ØS |
|------|-------|-----|-----|-----|-----|-----|-----|-----|-----|
| a | 414,5 | 350 | 175 | 100 | 150 | 354 | 250 | 374 | 6,2 |
| b | 414,5 | 350 | 186 | 100 | 150 | 354 | 250 | 374 | 6,2 |
| c | 448,5 | 450 | 216 | 100 | 182 | 388 | 400 | 408 | 9 |
| d | 562 | 650 | 244 | 100 | 232 | 482 | 500 | 512 | 9 |
| e | 692 | 650 | 292 | 150 | 272 | 582 | 500 | 612 | 11 |
| f | 692 | 650 | 305 | 150 | 272 | 582 | 500 | 612 | 11 |
| g | 692 | 650 | 310 | 150 | 272 | 582 | 500 | 612 | 11 |

TERMINALES / BUSSBARS

| Dim. | aT | bT | cT | dT | eT | ØT | ØR |
|------|----|----|----|----|----|----|----|
| a | 30 | 15 | 30 | 25 | 15 | 11 | 11 |
| b | 30 | 15 | 30 | 25 | 15 | 11 | 11 |
| c | 30 | 15 | 30 | 25 | 15 | 11 | 11 |
| d | 40 | 15 | 40 | 30 | 20 | 13 | 11 |
| e | 50 | 20 | 50 | 40 | 25 | 13 | 13 |
| f | 50 | 20 | 50 | 40 | 25 | 13 | 13 |
| g | 50 | 20 | 50 | 40 | 25 | 13 | 13 |

081027 Rev.:1

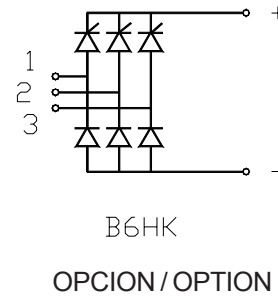
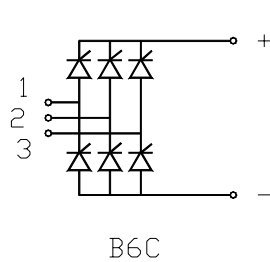
RECTIFICADORES GUASCH, S.A.

Ciutat de Granada, 80
08005 BARCELONA
SPAIN

Se reserva el derecho de cambiar los límites, las condiciones de prueba y dimensiones indicadas en esta hoja sin previo aviso.
Reserves the right to change limits, test conditions and dimensions given in this data sheet at any time without previous notice.

Tel.: +34 93 309 88 91
Fax.: +34 93 300 18 41
e-mail: info@e-guasch.com
www.e-guasch.com

CIRCUITOS B6C / B6C CIRCUIT.



B6C THREE PHASE THYRISTOR BRIDGES (NATURAL COOLING)

| REFERENCIA | I _{DC} (A) @ 45°C | I _{FSM} (*) | I ² t (*) | V _{RRM} | Dis./H.S. | Dim. |
|------------------|----------------------------|----------------------|------------------------|------------------|-------------|------|
| RP-B6C0350N12... | 350 | 4600 | 100kA ² s | 1200 | RG15168/150 | a |
| RP-B6C0450N12... | 450 | 8400 | 350kA ² s | | | b |
| RP-B6C0500N12... | 500 | 11000 | 650kA ² s | | | c |
| RP-B6C0600N12... | 600 | 27000 | 3700kA ² s | | RG15720/300 | d |
| RP-B6C0700N12... | 700 | 11000 | 650kA ² s | | | e |
| RP-B6C0850N12... | 850 | 27000 | 3700kA ² s | | RG15840/300 | f |
| RP-B6C1200N12... | 1200 | | | | | g |
| RP-B6C1450N12... | 1450 | 37000 | 6800kA ² s | | | |
| RP-B6C1700N12... | 1700 | 64000 | 20000kA ² s | | | |

(*) Aprox. Data

B6C THREE PHASE THYRISTOR BRIDGES (FORCED COOLING 6m/s)

| REFERENCIA | I _{DC} (A) @ 35°C | I _{FSM} | I ² t | V _{RRM} | Dis./H.S. | Dim. |
|------------------|----------------------------|------------------|------------------------|------------------|-------------|------|
| RP-B6C0600F12... | 600 | 4600 | 100kA ² s | 1200 | RG15168/150 | a |
| RP-B6C0800F12... | 800 | 8400 | 350kA ² s | | | b |
| RP-B6C0950F12... | 950 | 11000 | 650kA ² s | | | c |
| RP-B6C1200F12... | 1200 | 27000 | 3700kA ² s | | RG15720/300 | d |
| RP-B6C1400F12... | 1400 | 11000 | 650kA ² s | | | e |
| RP-B6C2000F12... | 2000 | 27000 | 3700kA ² s | | RG15840/300 | f |
| RP-B6C2300F12... | 2300 | | | | | g |
| RP-B6C2950F12... | 2950 | 37000 | 6800kA ² s | | | |
| RP-B6C3900F12... | 3900 | 64000 | 20000kA ² s | | | |

(*) Aprox. Data

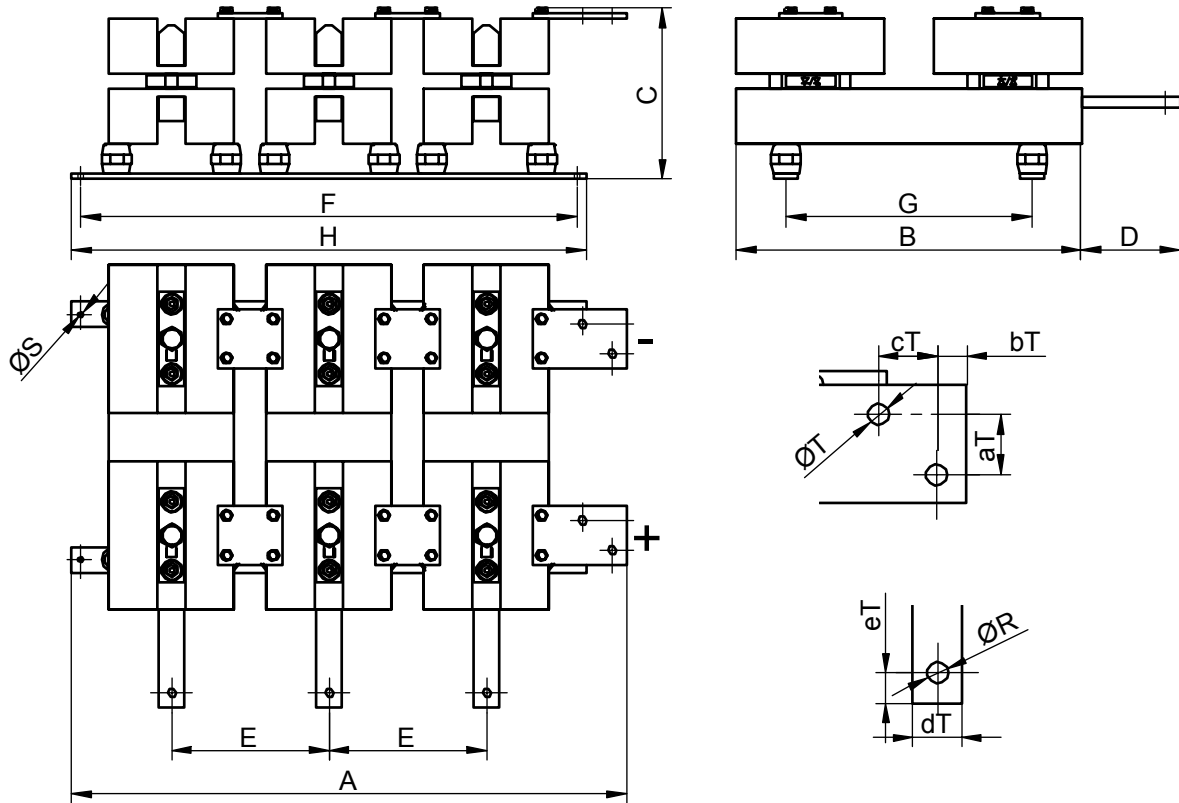
RECTIFICADORES GUASCH, S.A.

Ciutat de Granada, 80
08005 BARCELONA
SPAIN

Se reserva el derecho de cambiar los límites, las condiciones de prueba y dimensiones indicadas en esta hoja sin previo aviso.
Reserves the right to change limits, test conditions and dimensions given in this data sheet at any time without previous notice.

Tel.: +34 93 309 88 91
Fax.: +34 93 300 18 41
e-mail: info@e-guasch.com
www.e-guasch.com

DIMENSIONES / DIMENSIONS



DIMENSIONES MONTAJE / ASSEMBLY DIMENSIONS

| Dim. | A | B | C | D | E | F | G | H | ØS |
|------|-------|-----|-----|-----|-----|-----|-----|-----|-----|
| a | 564,5 | 350 | 175 | 100 | 150 | 504 | 250 | 524 | 6,2 |
| b | 564,5 | 350 | 186 | 100 | 150 | 504 | 250 | 524 | 6,2 |
| c | 630,5 | 450 | 216 | 100 | 182 | 570 | 400 | 590 | 9 |
| d | 794 | 650 | 244 | 100 | 232 | 714 | 500 | 744 | 9 |
| e | 964 | 650 | 292 | 150 | 272 | 854 | 500 | 884 | 11 |
| f | 964 | 650 | 305 | 150 | 272 | 854 | 500 | 884 | 11 |
| g | 964 | 650 | 310 | 150 | 272 | 854 | 500 | 884 | 11 |

TERMINALES / BUSSBARS

| Dim. | aT | bT | cT | dT | eT | ØT | ØR |
|------|----|----|----|----|----|----|----|
| a | 30 | 15 | 30 | 25 | 15 | 11 | 11 |
| b | 30 | 15 | 30 | 25 | 15 | 11 | 11 |
| c | 30 | 15 | 30 | 25 | 15 | 11 | 11 |
| d | 40 | 15 | 40 | 30 | 20 | 13 | 11 |
| e | 50 | 20 | 50 | 40 | 25 | 13 | 13 |
| f | 50 | 20 | 50 | 40 | 25 | 13 | 13 |
| g | 50 | 20 | 50 | 40 | 25 | 13 | 13 |

081027 Rev.:1

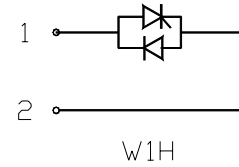
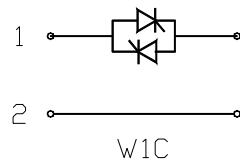
RECTIFICADORES GUASCH, S.A.

Ciutat de Granada, 80
08005 BARCELONA
SPAIN

Se reserva el derecho de cambiar los límites, las condiciones de prueba y dimensiones indicadas en esta hoja sin previo aviso.
Reserves the right to change limits, test conditions and dimensions given in this data sheet at any time without previous notice.

Tel.: +34 93 309 88 91
Fax.: +34 93 300 18 41
e-mail: info@e-guasch.com
www.e-guasch.com

CIRCUITOS W1C / W1C CIRCUIT.



OPCION / OPTION

W1C SINGLE PHASE ANTIPARALLEL THYRISTORS (NATURAL COOLING)

| REFERENCIA | I _{RMS} (A) @ 45°C | I _{FSM} (*) | I ² t (*) | V _{RRM} | Dis./H.S. | Dim. |
|------------------|-----------------------------|----------------------|------------------------|------------------|-------------|------|
| RP-W1C0250N12... | 250 | 4600 | 100kA ² s | 1200 | RG15168/150 | a |
| RP-W1C0300N12... | 300 | 8400 | 350kA ² s | | | b |
| RP-W1C0350N12... | 350 | 11000 | 650kA ² s | | RG15560/200 | c |
| RP-W1C0450N12... | 450 | 27000 | 3700kA ² s | | | d |
| RP-W1C0550N12... | 550 | 11000 | 650kA ² s | | RG15720/300 | e |
| RP-W1C0650N12... | 650 | 27000 | 3700kA ² s | | | f |
| RP-W1C0950N12... | 950 | | | | g | |
| RP-W1C1100N12... | 1100 | 37000 | 6800kA ² s | | RG15840/300 | f |
| RP-W1C1300N12... | 1300 | 64000 | 20000kA ² s | | | g |

(*) Aprox. Data

W1C SINGLE PHASE ANTIPARALLEL THYRISTORS (FORCED COOLING 6m/s)

| REFERENCIA | I _{RMS} (A) @ 35°C | I _{FSM} | I ² t | V _{RRM} | Dis./H.S. | Dim. |
|------------------|-----------------------------|------------------|------------------------|------------------|-------------|------|
| RP-W1C0500F12... | 500 | 4600 | 100kA ² s | 1200 | RG15168/150 | a |
| RP-W1C0600F12... | 600 | 8400 | 350kA ² s | | | b |
| RP-W1C0750F12... | 750 | 11000 | 650kA ² s | | RG15560/200 | c |
| RP-W1C1000F12... | 1000 | 27000 | 3700kA ² s | | | d |
| RP-W1C1200F12... | 1200 | 11000 | 650kA ² s | | RG15720/300 | e |
| RP-W1C1700F12... | 1700 | 27000 | 3700kA ² s | | | f |
| RP-W1C1900F12... | 1900 | | | | g | |
| RP-W1C2400F12... | 2400 | 37000 | 6800kA ² s | | RG15840/300 | f |
| RP-W1C3050F12... | 3050 | 64000 | 20000kA ² s | | | g |

(*) Aprox. Data

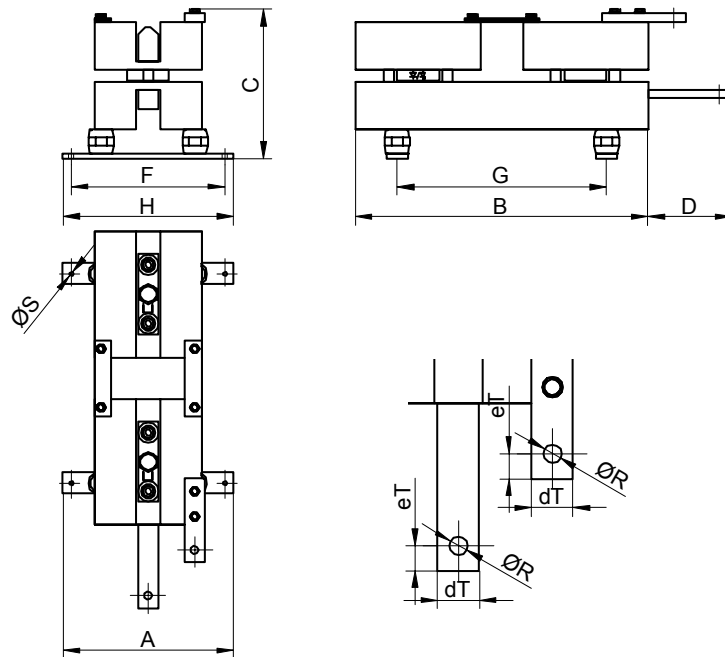
RECTIFICADORES GUASCH, S.A.

Ciutat de Granada, 80
08005 BARCELONA
SPAIN

Se reserva el derecho de cambiar los límites, las condiciones de prueba y dimensiones indicadas en esta hoja sin previo aviso.
Reserves the right to change limits, test conditions and dimensions given in this data sheet at any time without previous notice.

Tel.: +34 93 309 88 91
Fax.: +34 93 300 18 41
e-mail: info@e-guasch.com
www.e-guasch.com

DIMENSIONES / DIMENSIONS



DIMENSIONES MONTAJE / ASSEMBLY DIMENSIONS

| Dim. | A | B | C | D | E | F | G | H | ØS |
|------|-----|-----|-----|-----|-----|-----|-----|-----|-----|
| a | 524 | 350 | 175 | 100 | 150 | 504 | 250 | 524 | 6,2 |
| b | 524 | 350 | 186 | 100 | 150 | 504 | 250 | 524 | 6,2 |
| c | 590 | 450 | 216 | 100 | 182 | 570 | 400 | 590 | 9 |
| d | 744 | 650 | 244 | 100 | 232 | 714 | 500 | 744 | 9 |
| e | 884 | 650 | 292 | 150 | 272 | 854 | 500 | 884 | 11 |
| f | 884 | 650 | 305 | 150 | 272 | 854 | 500 | 884 | 11 |
| g | 884 | 650 | 310 | 150 | 272 | 854 | 500 | 884 | 11 |

TERMINALES / BUSSBARS

| Dim. | aT | bT | cT | dT | eT | ØT | ØR |
|------|----|----|----|----|----|----|----|
| a | na | na | na | 25 | 15 | na | 11 |
| b | na | na | na | 25 | 15 | na | 11 |
| c | na | na | na | 25 | 15 | na | 11 |
| d | na | na | na | 30 | 20 | na | 11 |
| e | na | na | na | 40 | 25 | na | 13 |
| f | na | na | na | 40 | 25 | na | 13 |
| g | na | na | na | 40 | 25 | na | 13 |

081027 Rev.:1

RECTIFICADORES GUASCH, S.A.

Ciutat de Granada, 80
08005 BARCELONA
SPAIN

Se reserva el derecho de cambiar los límites, las condiciones de prueba y dimensiones indicadas en esta hoja sin previo aviso.
Reserves the right to change limits, test conditions and dimensions given in this data sheet at any time without previous notice.

Tel.: +34 93 309 88 91
Fax.: +34 93 300 18 41
e-mail: info@e-guasch.com
www.e-guasch.com

CIRCUITOS W3C / W3C CIRCUIT.



W3C THREE PHASE ANTIPARALLEL THYRISTORS (NATURAL COOLING)

| REFERENCIA | I _{RMS} (A) @ 45°C | I _{FSM} (*) | I ² t (*) | V _{RRM} | Dis./H.S. | Dim. |
|------------------|-----------------------------|----------------------|------------------------|------------------|-------------|------|
| RP-W3C0250N12... | 250 | 4600 | 100kA ² s | 1200 | RG15168/150 | a |
| RP-W3C0300N12... | 300 | 8400 | 350kA ² s | | | b |
| RP-W3C0350N12... | 350 | 11000 | 650kA ² s | | | c |
| RP-W3C0450N12... | 450 | 27000 | 3700kA ² s | | RG15720/300 | d |
| RP-W3C0550N12... | 550 | 11000 | 650kA ² s | | | e |
| RP-W3C0650N12... | 650 | 27000 | 3700kA ² s | | RG15840/300 | f |
| RP-W3C0950N12... | 950 | | | | | g |
| RP-W3C1100N12... | 1100 | 37000 | 6800kA ² s | | | |
| RP-W3C1300N12... | 1300 | 64000 | 20000kA ² s | | | |

(*) Aprox. Data

W3C THREE PHASE ANTIPARALLEL THYRISTORS (FORCED COOLING 6m/s)

| REFERENCIA | I _{RMS} (A) @ 35°C | I _{FSM} | I ² t | V _{RRM} | Dis./H.S. | Dim. |
|------------------|-----------------------------|------------------|------------------------|------------------|-------------|------|
| RP-W3C0500F12... | 500 | 4600 | 100kA ² s | 1200 | RG15168/150 | a |
| RP-W3C0600F12... | 600 | 8400 | 350kA ² s | | | b |
| RP-W3C0750F12... | 750 | 11000 | 650kA ² s | | | c |
| RP-W3C1000F12... | 1000 | 27000 | 3700kA ² s | | RG15720/300 | d |
| RP-W3C1200F12... | 1200 | 11000 | 650kA ² s | | | e |
| RP-W3C1700F12... | 1700 | 27000 | 3700kA ² s | | RG15840/300 | f |
| RP-W3C1900F12... | 1900 | | | | | g |
| RP-W3C2400F12... | 2400 | 37000 | 6800kA ² s | | | |
| RP-W3C3050F12... | 3050 | 64000 | 20000kA ² s | | | |

(*) Aprox. Data

RECTIFICADORES GUASCH, S.A.

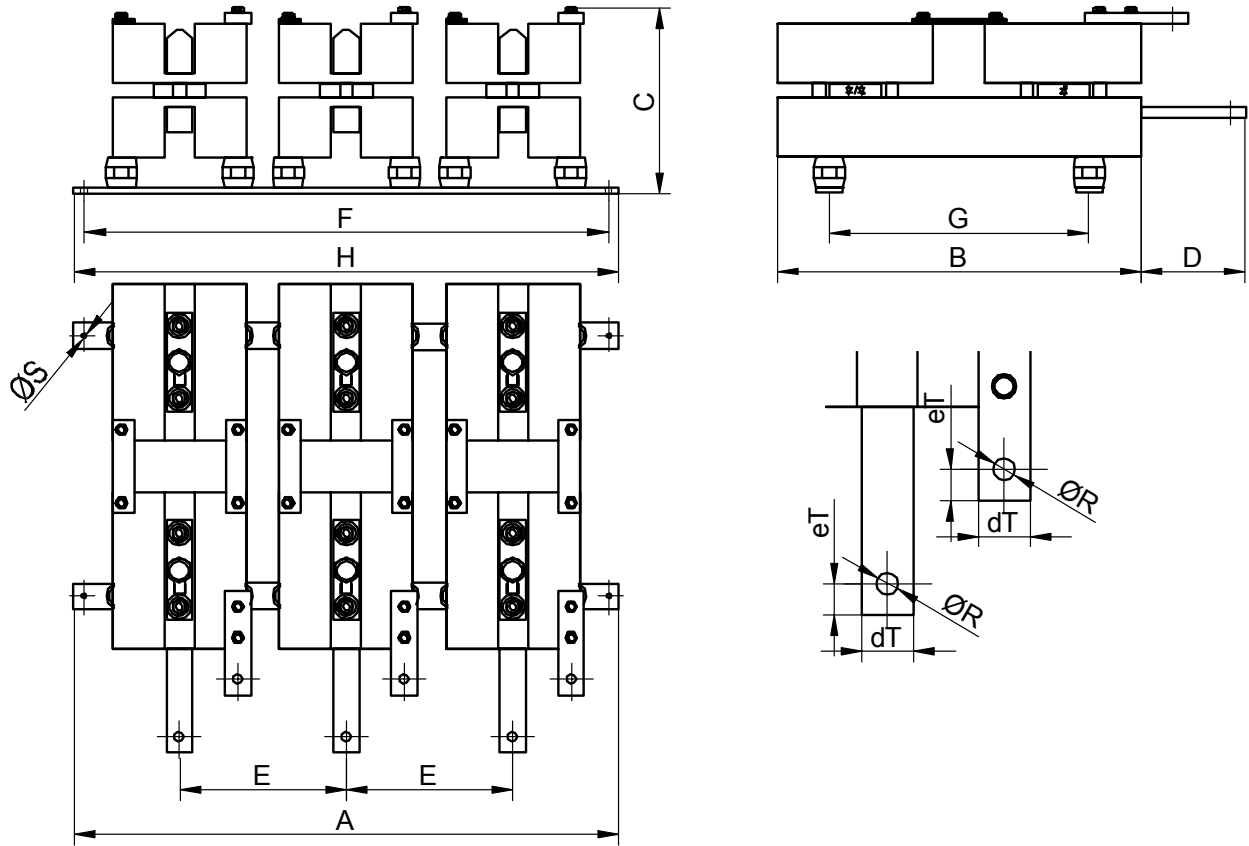
Ciutat de Granada, 80
08005 BARCELONA
SPAIN

Se reserva el derecho de cambiar los límites, las condiciones de prueba y dimensiones indicadas en esta hoja sin previo aviso.
Reserves the right to change limits, test conditions and dimensions given in this data sheet at any time without previous notice.

Tel.: +34 93 309 88 91
Fax.: +34 93 300 18 41
e-mail: info@e-guasch.com
www.e-guasch.com

081027 Rev.:1

DIMENSIONES / DIMENSIONS



DIMENSIONES MONTAJE / ASSEMBLY DIMENSIONS

| Dim. | A | B | C | D | E | F | G | H | ØS |
|------|-----|-----|-----|-----|-----|-----|-----|-----|-----|
| a | 524 | 350 | 175 | 100 | 150 | 504 | 250 | 524 | 6,2 |
| b | 524 | 350 | 186 | 100 | 150 | 504 | 250 | 524 | 6,2 |
| c | 590 | 450 | 216 | 100 | 182 | 570 | 400 | 590 | 9 |
| d | 744 | 650 | 244 | 100 | 232 | 714 | 500 | 744 | 9 |
| e | 884 | 650 | 292 | 150 | 272 | 854 | 500 | 884 | 11 |
| f | 884 | 650 | 305 | 150 | 272 | 854 | 500 | 884 | 11 |
| g | 884 | 650 | 310 | 150 | 272 | 854 | 500 | 884 | 11 |

TERMINALES / BUSSBARS

| Dim. | aT | bT | cT | dT | eT | ØT | ØR |
|------|----|----|----|----|----|----|----|
| a | na | na | na | 25 | 15 | na | 11 |
| b | na | na | na | 25 | 15 | na | 11 |
| c | na | na | na | 25 | 15 | na | 11 |
| d | na | na | na | 30 | 20 | na | 11 |
| e | na | na | na | 40 | 25 | na | 13 |
| f | na | na | na | 40 | 25 | na | 13 |
| g | na | na | na | 40 | 25 | na | 13 |

081027 Rev.:1

RECTIFICADORES GUASCH, S.A.

Ciutat de Granada, 80
08005 BARCELONA
SPAIN

Se reserva el derecho de cambiar los límites, las condiciones de prueba y dimensiones indicadas en esta hoja sin previo aviso.
Reserves the right to change limits, test conditions and dimensions given in this data sheet at any time without previous notice.

Tel.: +34 93 309 88 91
Fax.: +34 93 300 18 41
e-mail: info@e-guasch.com
www.e-guasch.com

CIRCUITO B6U ESPECIAL APLICACIONES TRACCION / B6U CIRCUIT SPECIAL TRACTION APPLICATIONS

B6U THREE PHASE DIODE BRIDGES (NATURAL COOLING)

| REFERENCIA | I _{DC} (A) @ 45°C | I _{FSM} (*) | I ² t (*) | V _{RRM} | Dis./H.S. | Dim. |
|-------------------|----------------------------|----------------------|----------------------|------------------|-------------|------|
| RP-B6U0610N60 | 610 | 10000 | 500kA ² s | 6000 | RG15168/150 | a |
| RP-B6U0750N60 | 750 | | | | RG15168/300 | b |
| RP-B6U0600N44 | 600 | 9200 | 423kA ² s | 4400 | RG15560/150 | c |
| RP-B6U0350N70 (1) | 350 | | | 7000 | | d |

(*) Aprox. Data

(1) Dos diodos en serie / Dual series diodes

B6U THREE PHASE DIODE BRIDGES (FORCED COOLING 6m/s)

| REFERENCIA | I _{DC} (A) @ 35°C | I _{FSM} (*) | I ² t (*) | V _{RRM} | Dis./H.S. | Dim. |
|-------------------|----------------------------|----------------------|----------------------|------------------|-------------|------|
| RP-B6U1200N60 | 1200 | 10000 | 500kA ² s | 6000 | RG15168/150 | a |
| RP-B6U1400N60 | 1400 | | | | RG15168/300 | b |
| RP-B6U1100N44 | 1100 | 9200 | 423kA ² s | 4400 | RG15560/150 | c |
| RP-B6U0740N70 (1) | 740 | | | 7000 | | d |

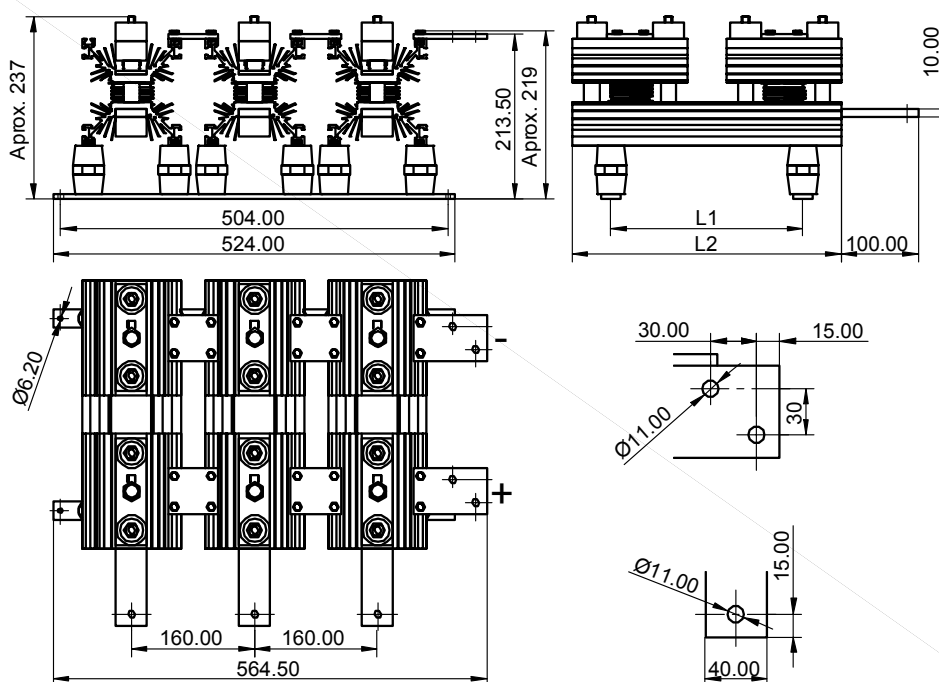
(*) Aprox. Data

(1) Dos diodos en serie / Dual series diodes

a & b dimensions:

L1 & L2 Dim.

| | L1 | L2 |
|---|-----|-----|
| a | 250 | 350 |
| b | 450 | 650 |



RECTIFICADORES GUASCH, S.A.

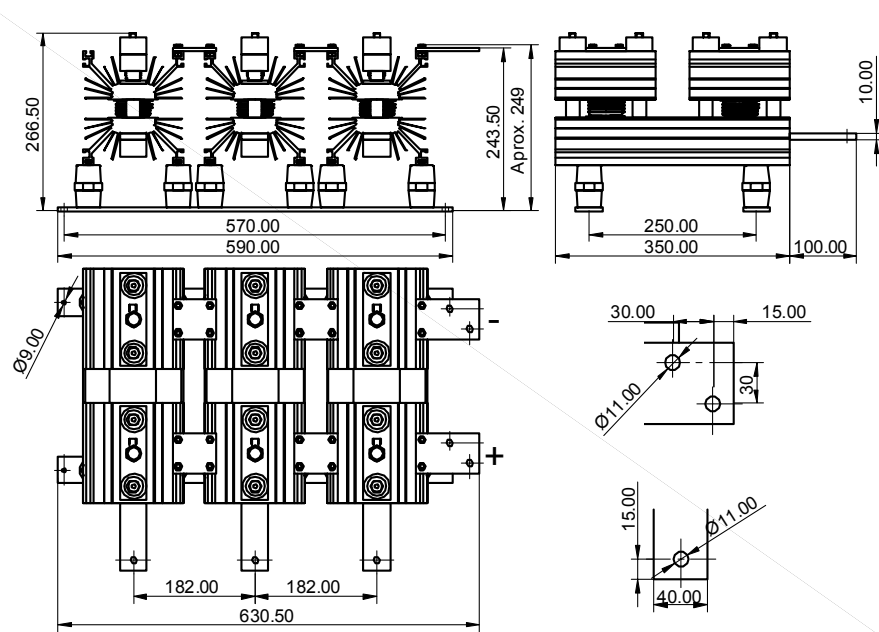
Ciutat de Granada, 80
08005 BARCELONA
SPAIN

Se reserva el derecho de cambiar los límites, las condiciones de prueba y dimensiones indicadas en esta hoja sin previo aviso.
Reserves the right to change limits, test conditions and dimensions given in this data sheet at any time without previous notice.

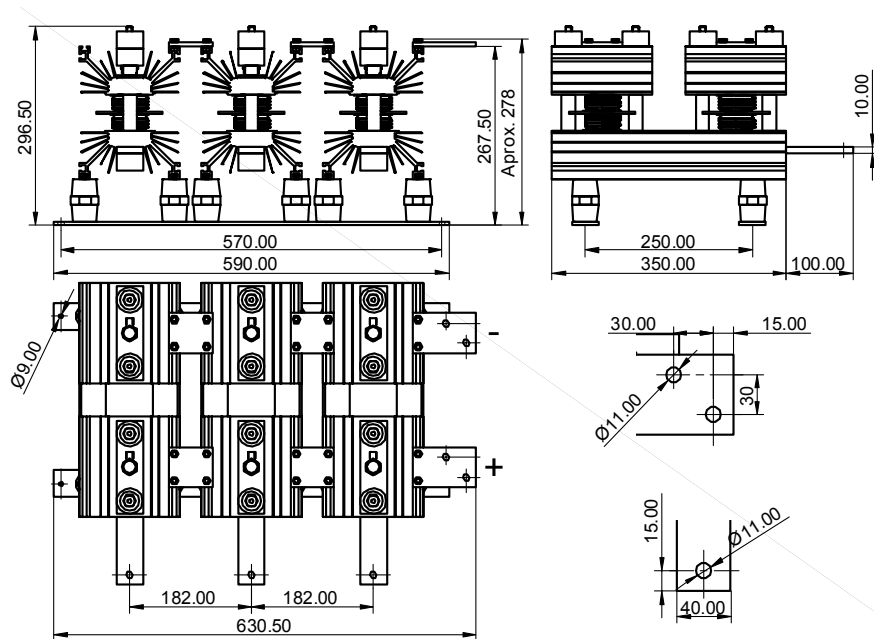
Tel.: +34 93 309 88 91
Fax.: +34 93 300 18 41
e-mail: info@e-guasch.com
www.e-guasch.com

081027 Rev.:1

c dimensions:



d dimensions:



081027 Rev.:1

RECTIFICADORES GUASCH, S.A.

Ciutat de Granada, 80
08005 BARCELONA
SPAIN

Se reserva el derecho de cambiar los límites, las condiciones de prueba y dimensiones indicadas en esta hoja sin previo aviso.
Reserves the right to change limits, test conditions and dimensions given in this data sheet at any time without previous notice.

Tel.: +34 93 309 88 91
Fax: +34 93 300 18 41
e-mail: info@e-guasch.com
www.e-guasch.com

**ANOTACIONES EN EL «DATASHEET» :**

RECTIFICADORES GUASCH, S.A. utiliza la siguiente anotación para identificar el estado del producto, en el lado izquierdo de la primera página:

PRELIMINARY TECHNICAL INFORMATION: El producto se encuentra en proceso de diseño y desarrollo. La información presenta los datos del producto pero algunas características pueden cambiar.

ADVANCED TECHNICAL INFORMATION: El producto se encuentra totalmente diseñado y las características se refieren a la fabricación en serie.

Sin anotación: Los parámetros del producto están fijados y se suministra de acuerdo con las especificaciones publicadas.

Los datos indicados en esta publicación corresponden a especificaciones de producto, queda excluida cualquier garantía expresa o implícita sobre sus propiedades o su aplicación, así como cualquier responsabilidad sobre daños directos o indirectos producidos por los materiales o resultantes de su aplicación. La empresa se reserva el derecho de realizar cambios en las especificaciones de los productos sin previo aviso. La información respecto a métodos de uso y aplicaciones se indica sólo como guía y no constituye garantía alguna de funcionamiento satisfactorio en un determinado equipo o aplicación. Es responsabilidad del usuario determinar la idoneidad del producto para su aplicación utilizando la información disponible y asegurarse de que la misma está actualizada.

Cualquier nombre de producto o marca usada en esta publicación corresponde a marcas depositadas, marcas registradas o nombres protegidos por sus respectivos propietarios.

**DATASHEET ANNOTATIONS:**

RECTIFICADORES GUASCH, S.A. annotate datasheets in the left corner of the front page, to indicate product status:

PRELIMINARY TECHNICAL INFORMATION: The product is in design and development. The datasheet represents the product as it is understood but details may change.

ADVANCED TECHNICAL INFORMATION: The product design is complete and final characterisation for volume production is well in hand.

No Annotation: The product parameters are fixed and the product is available to datasheet specification.

The technical data are to specify components, not to guarantee their properties. No warranty or guarantee expressed or implied is made regarding delivery or performance. The Company reserves the right to alter without prior notice the specification of any product. Information concerning possible methods of use is provided as a guide only and does not constitute any guarantee that such methods of use will be satisfactory in a specific piece of equipment. It is the user's responsibility to fully determine the performance and suitability of any equipment using such information and to ensure that any publication or data used is up to date.

All brand names and product names used in this publication are trademarks, registered trademarks or trade names of their respective owners.

**DATASHEET ANNOTATIONS:**

RECTIFICADORES GUASCH, S.A. Indiqué dans la notice technique a la part inferieur à gauche le suivant pour vous informer de la situation du produits

PRELIMINARY TECHNICAL INFORMATION: Le produit est dans la conception et le développement. La notice technique représente le produit comme il a été conçu mais les détails peuvent changer.

ADVANCED TECHNICAL INFORMATION: La conception de produit est fini et la notice technique est comme il a été conçu pour la fabrication.

Sans annotation: La notice technique indique que le produit est selon la même

Les donnes indiqués dans la notice technique sont conformément aux spécifications des composants, sont exclues toutes autres conditions ou garanties exprimées ou implicites concernant la qualité et le bon fonctionnement des matériels, ainsi que toute responsabilité pour les dommages causés directement ou indirectement par les matériels ou résultant de leur utilisation. Nous nous reservons la possibilite de changement sans notification. L'information à propos des méthodes possibles d'usage est fournie comme un guide conformément aux spécifications et instructions et ne constitue pas garantie que telles méthodes d'usage sera satisfaisant dans un morceau spécifique d'équipement. C'est la responsabilité de l'Acheteur déterminer l'exécution et l'aptitude du produit et s'assure qu'il a la derriere actualisation de la notice technique.

Des noms de marque et produit utilisés dans cette publication sont enregistrées et propriété de leurs propriétaires respectifs.

© RECTIFICADORES GUASCH, S.A.

DOCUMENTACION TECNICA, THECNICAL DOCUMENTATION, DOCUMENTATION TECHNIQUE
PRODUCIDO EN ESPAÑA, PRODUCED IN SPAIN, PRODUIT EN ESPAGNA
PROHIBIDA SU VENTA, NOT FOR SALE, PAS A VENDRE

Your Needs, Our Solutions

RECTIFICADORES GUASCH, S.A.

Ciutat de Granada, 80
08005 BARCELONA
SPAIN

Se reserva el derecho de cambiar los límites, las condiciones de prueba y dimensiones indicadas en esta hoja sin previo aviso.
Reserves the right to change limits, test conditions and dimensions given in this data sheet at any time without previous notice.

Tel.: +34 93 309 88 91
Fax.: +34 93 300 18 41
e-mail: info@e-guasch.com
www.e-guasch.com