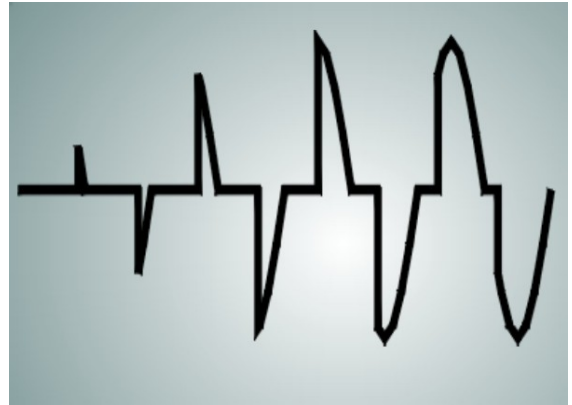


**HIGHLIGHTS**

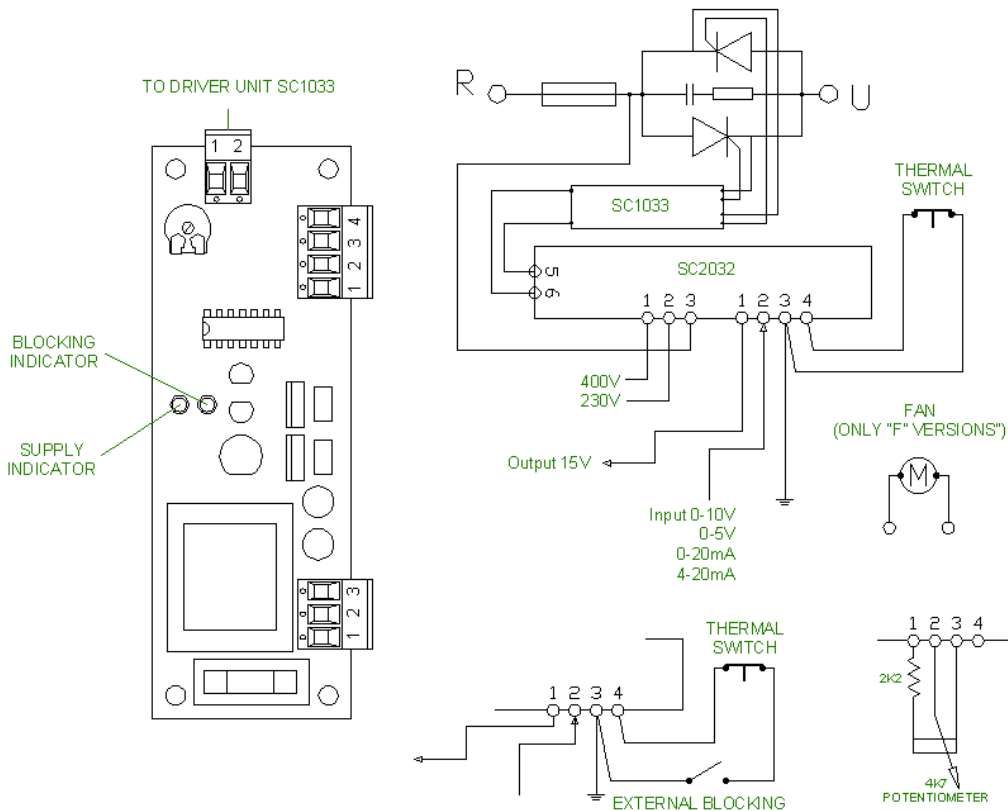
- Applicable to MF-W1C and MF-W3C references.
- 230V<sub>AC</sub> & 400V<sub>AC</sub>, 50Hz applications
- Reliability.
- Short delivery time.
- Phase angle delay control
- Control input 0-10V (standard option).
- Optional input control 0-5V, 0-20mA & 4-20mA.



**DESCRIPTION**

MFR Series, consists in single phase and three phase power stacks, composed of power modules with a phase angle regulation firing board for AC controls. Power stacks standards are named as MF Series, and the firing board is used to control the power resistive loads with a simple driving. Refer to MF Series datasheets for working limits and technical characteristics.

**SINGLE PHASE TYPES (W1C)**



120307 Rev.:2

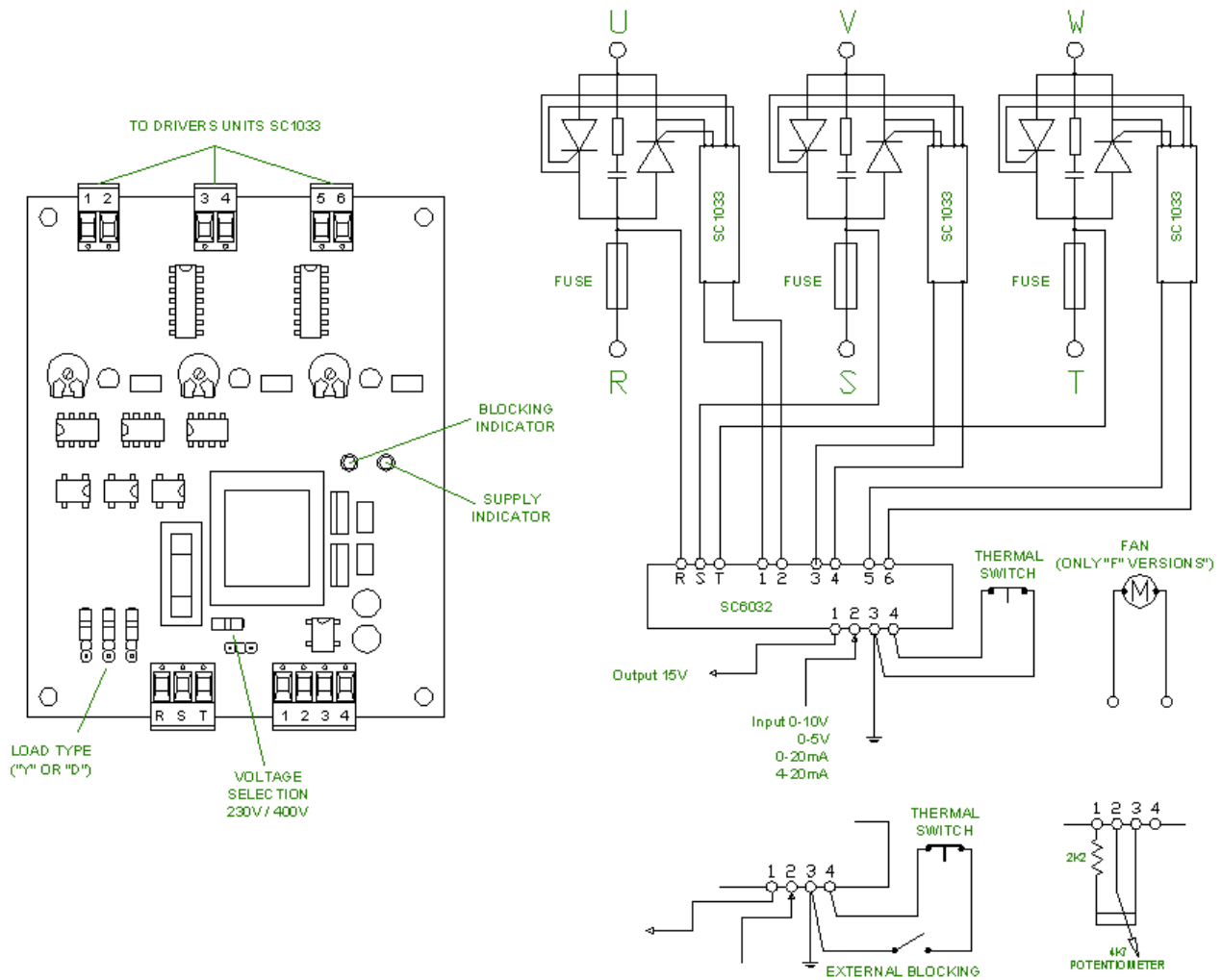
**RECTIFICADORES GUASCH, S.A.**

Ciutat de Granada, 80  
08005 BARCELONA  
SPAIN

Se reserva el derecho de cambiar los límites, las condiciones de prueba y dimensiones indicadas en esta hoja sin previo aviso. Reserves the right to change limits, test conditions and dimensions given in this data sheet at any time without previous notice.

Tel.: +34 93 309 88 91  
Fax.: +34 93 300 18 41  
e-mail: info@e-guasch.com  
www.e-guasch.com

### THREE PHASE TYPES (W3C)



### CONTROL CONNECTIONS

Depending on the type, the control connection is made directly to the control board or through terminal blocks (WAGO series 260).



### RECTIFICADORES GUASCH, S.A.

Ciutat de Granada, 80  
08005 BARCELONA  
SPAIN

Se reserva el derecho de cambiar los límites, las condiciones de prueba y dimensiones indicadas en esta hoja sin previo aviso.  
Reserves the right to change limits, test conditions and dimensions given in this data sheet at any time without previous notice.

Tel.: +34 93 309 88 91  
Fax.: +34 93 300 18 41  
e-mail: info@e-guasch.com  
www.e-guasch.com

**LOAD CHARACTERISTICS AND CONNECTIONS**

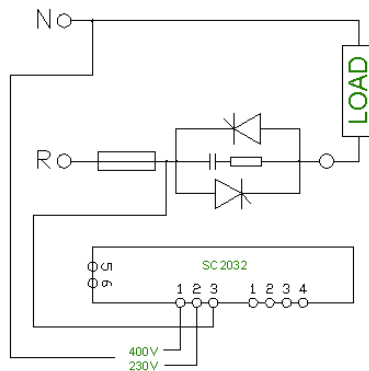
MFR series are intended only for resistive loads. There is not any guarantee that other loads will work properly.

Factory default value is 400V, as an option 230V is available by changing the connections (single phase types), or the jumpers position (three phase types).

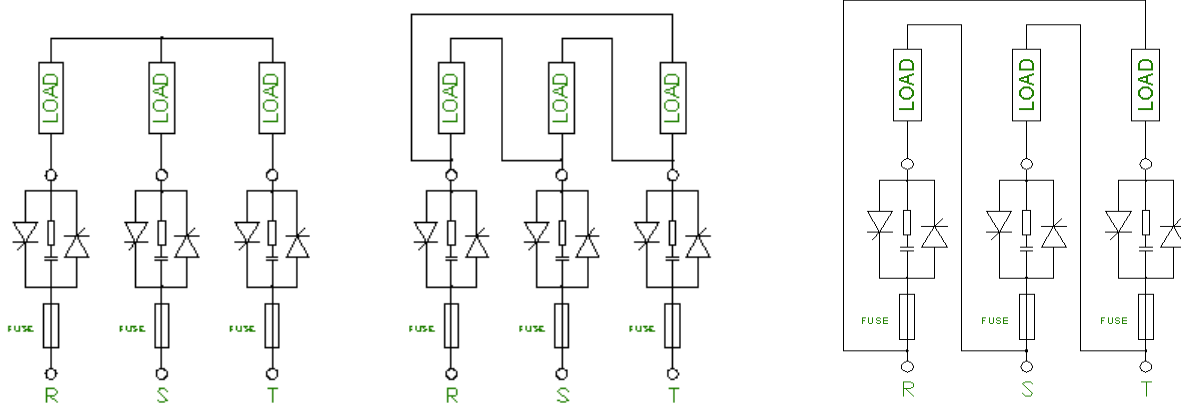
Optimum frequency working is 50Hz. Working up to 60Hz is possible with derating the control signal.

Working with low conduction angle values produce instability in applications without neutral point (star without neutral or delta loads), use external blocking for guarantee 0 voltage output.

For single phase loads, there is only one power cable in the assembly, the user must provide the other pole (see figure below).



For three phase loads, pay special attention for star ("Y") or delta ("D") connections (see figures below).



SC6032 CONFIGURATION: "Y" (STAR)

SC6032 CONFIGURATION: "D" (DELTA)

120307 Rev.:2

## ORDER CODES & OPTIONS

Adding a "R" to MF-W1C and MF-W3C references, becomes the MFR series for phase angle control systems.

The standard control signal is from 0 to 10V. For other optional control signals, the standard reference is modified by adding at the end "/05", "/020", "/420" which means: 0 to 5V, 0 to 20mA and 4 to 20mA respectively.

As an example:

MFR-W3C0028N12RCVTF/420

The example refers to a MF Series power stack, MF-W3C0028N12RCVTF, with a phase angle regulation firing board, and a control signal from 4 to 20mA.

## EMC DIRECTIVE

MFR Series are considered components without any direct function as defined in the EMC Directive. However, the end system or installation where these devices are used must comply with the essential protection requirements of the EMC Directive.

## MAXIMUM CURRENT

Due to, supply voltage variations and heating element resistance dispersion, a safety coefficient of 0.8 must be considered on the thyristor to determine the load's maximum nominal current at which the unit can operate safely.

## PERSONNEL

The installation, configuration, and maintenance of this power unit, must be supervised by a qualified and authorized person capable to perform in an industrial low voltage electrical environment.

## INSTALLATION AND USE SAFETY

-The installation and use must be done inside an electrical and cooled cabinet, with guarantees of protection from condensation and pollution. The cabinet must be closed and connected to safety earth according to applicable National Standards.

- MFR Series has included high speed fuses, which are only designed to protect the thyristors. These fuses

120307 Rev.:2

---

### RECTIFICADORES GUASCH, S.A.

Ciutat de Granada, 80  
08005 BARCELONA  
SPAIN

Se reserva el derecho de cambiar los límites, las condiciones de prueba y dimensiones indicadas en esta hoja sin previo aviso.  
Reserves the right to change limits, test conditions and dimensions given in this data sheet at any time without previous notice.

Tel.: +34 93 309 88 91  
Fax.: +34 93 300 18 41  
e-mail: [info@e-guasch.com](mailto:info@e-guasch.com)  
[www.e-guasch.com](http://www.e-guasch.com)

aren't a substitute of installation and wiring protection fuses. Remind that thyristors are not isolated devices, so it is necessary to provide an additional protection, i.e. electromechanical contactor, and extra isolation in accordance with wiring regulations in order to allow safe interventions.

-Please pay attention, only qualified personnel is allowed to access into the internal parts of this device.

-It is the user's responsibility to ensure that the installation, wiring and protection of the device are in accordance with the relevant standards and wiring regulations.

- Before proceeding any connection or disconnection, be sure that the cables and wires are insulated from the supply voltage.

- The earth connection must be connected first and disconnected last.

- Control signal wiring must be kept separate from power cables.

- Before dismounting, MFR assembly must be completely disconnected.

- While this device is operating, the heatsink reaches high temperatures, it is mandatory do not touch the heatsink and protect it from any accidental contact during the ON state. It is advisable to consider a safety prudential time, after the unit disconnection, until the temperature has decreased.

120307 Rev.:2

## ANOTACIONES EN LA HOJA DE ESPECIFICACIONES:

RECTIFICADORES GUASCH, S.A. utiliza la siguiente anotación para identificar el estado del producto, en el lado izquierdo de la primera página:

**PRELIMINARY TECHNICAL INFORMATION:** El producto se encuentra en proceso de diseño y desarrollo. La información presenta los datos del producto pero algunas características pueden cambiar.

**ADVANCED TECHNICAL INFORMATION:** El producto se encuentra totalmente diseñado y las características se refieren a la fabricación en serie.

Sin anotación: Los parámetros del producto están fijados y se suministra de acuerdo con las especificaciones publicadas.

Los datos indicados en esta publicación corresponden a especificaciones de producto, queda excluida cualquier garantía expresa o implícita sobre sus propiedades o su aplicación, así como cualquier responsabilidad sobre daños directos o indirectos producidos por los materiales o resultantes de su aplicación. La empresa se reserva el derecho de realizar cambios en las especificaciones de los productos sin previo aviso. La información respecto a métodos de uso y aplicaciones se indica sólo como guía y no constituye garantía alguna de funcionamiento satisfactorio en un determinado equipo o aplicación. Es responsabilidad del usuario determinar la idoneidad del producto para su aplicación utilizando la información disponible y asegurarse de que la misma esta actualizada.

Cualquier nombre de producto o marca usada en esta publicación corresponde a marcas depositadas, marcas registradas o nombres protegidos por sus respectivos propietarios.

## DATASHEET ANNOTATIONS:

RECTIFICADORES GUASCH, S.A. annotate datasheets in the left corner of the front page, to indicate product status:

**PRELIMINARY TECHNICAL INFORMATION:** The product is in design and development. The datasheet represents the product as it is understood but details may change.

**ADVANCED TECHNICAL INFORMATION:** The product design is complete and final characterisation for volume production is well in hand.

No Annotation: The product parameters are fixed and the product is available to datasheet specification.

The technical data are to specify components, not to guarantee their properties. No warranty or guarantee expressed or implied is made regarding delivery or performance. The Company reserves the right to alter without prior notice the specification of any product. Information concerning possible methods of use is provided as a guide only and does not constitute any guarantee that such methods of use will be satisfactory in a specific piece of equipment. It is the user's responsibility to fully determine the performance and suitability of any equipment using such information and to ensure that any publication or data used is up to date.

All brand names and product names used in this publication are trademarks, registered trademarks or trade names of their respective owners.

## DATASHEET ANNOTATIONS:

RECTIFICADORES GUASCH, S.A. Indiqué dans la notice technique a la part inferieur à gauche le suivant pour vous informer de la situation du produits

**PRELIMINARY TECHNICAL INFORMATION:** Le produit est dans la conception et le développement. La notice technique représente le produit comme il a été conçu mais les détails peuvent changer.

**ADVANCED TECHNICAL INFORMATION:** La conception de produit est fini et la notice technique est comme il a été conçu pour la fabrication.

Sans annotation: La notice technique indique que le produit est selon la même

Les donnes indiqués dans la notice technique sont conformément aux spécifications des composants, sont exclues toutes autres conditions ou garanties exprimées ou implicites concernant la qualité et le bon fonctionnement des matériels, ainsi que toute responsabilité pour les dommages causés directement ou indirectement par les matériels ou résultant de leur utilisation. Nous nous réservons la possibilité de changement sans notification. L'information à propos des méthodes possibles d'usage est fournie comme un guide conformément aux spécifications et instructions et ne constitue pas garantie que telles méthodes d'usage sera satisfaisant dans un morceau spécifique d'équipement. C'est la responsabilité de l'Acheteur déterminer l'exécution et l'aptitude du produit et s'assure qu'il a la dernière mise à jour de la notice technique. Des noms de marque et produit utilisés dans cette publication sont enregistrées et propriété de leurs propriétaires respectifs.

## © RECTIFICADORES GUASCH, S.A.

DOCUMENTACION TECNICA, TECHNICAL DOCUMENTATION, DOCUMENTATION TECHNIQUE  
PRODUCIDO EN ESPAÑA, PRODUCED IN SPAIN, PRODUIT EN ESPAGNA  
PROHIBIDA SU VENTA, NOT FOR SALE, PAS A VENDRE

# Your Needs, Our Solutions

120307 Rev.:2

**RECTIFICADORES GUASCH, S.A.**

Ciutat de Granada, 80  
08005 BARCELONA  
SPAIN

Se reserva el derecho de cambiar los límites, las condiciones de prueba y dimensiones indicadas en esta hoja sin previo aviso.  
Reserves the right to change limits, test conditions and dimensions given in this data sheet at any time without previous notice.

Tel.: +34 93 309 88 91  
Fax.: +34 93 300 18 41  
e-mail: [info@e-guasch.com](mailto:info@e-guasch.com)  
[www.e-guasch.com](http://www.e-guasch.com)