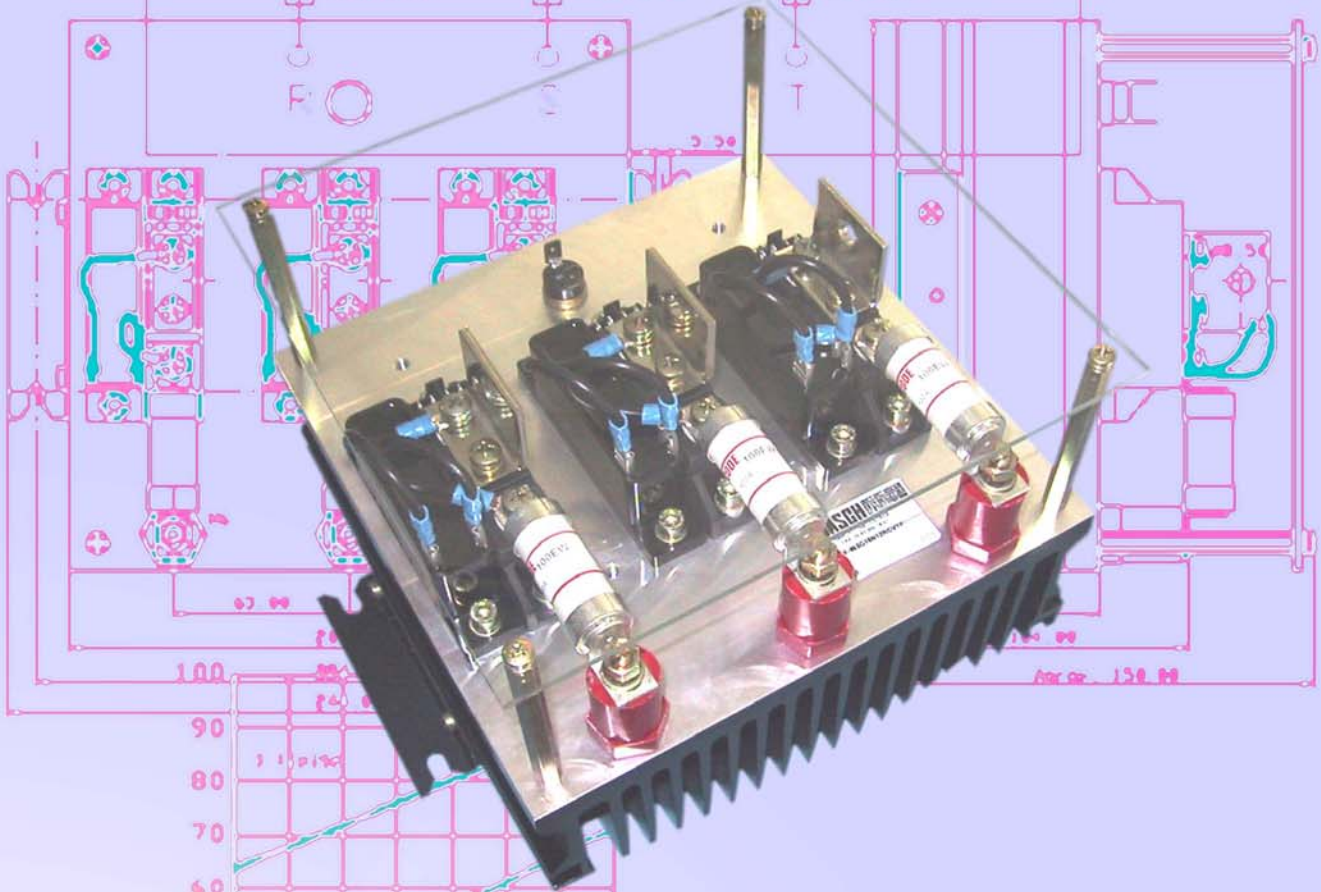


MONTAJES ESTANDAR CON MODULOS DE POTENCIA

STANDARD ASSEMBLIES WITH POWER MODULES

SERIE MF



CARACTERISTICAS

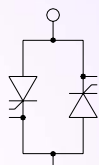
- Amplia gama.
- Fiabilidad.
- Plazo de entrega reducido.
- Fusibles ultrarrápidos incluidos.
- Termostato, red RC y varistor incluidos.
- Listo para conectar.
- Tensión de trabajo hasta 400V_{RMS}.
- Aislamiento de 2500V_{RMS} /1 min.

HIGHLIGHTS

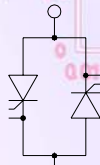
- Wide range.
- Reliability.
- Short delivery time.
- Ultrafast fuses included.
- Thermostat, snubber and varistor included.
- Ready to use.
- Working voltage up to 400V_{RMS}.
- Insulation 2500V_{RMS} /1 min.

CIRCUITOS DE APLICACION ESTANDAR

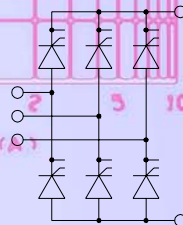
STANDARD APPLICATION CIRCUITS



W1C



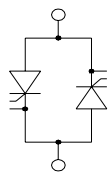
W3C



B6C

TIPOS ESTANDAR / STANDARD TYPES

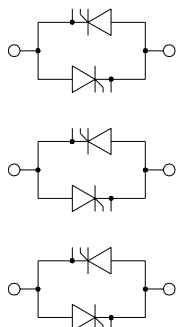
W1C



W1C

TIPO / TYPE	IRMS max / IN	Disipador / Heatsink	Semiconductor	Dimensiones / Sizes
MF-W1C037N12RCVTF	37/28 ARMS	Al. 3 mm.	MCC26-12io1B	144x200x97
MF-W1C046N12RCVTF	46/40 ARMS	RG14015/200N	MCC26-12io1B	144x200x117
MF-W1C100N12RCVTF	100/75 ARMS	RG14015/200N	MCC95-12io1B	144x200x117
MF-W1C156N12RCVTF	156/106 ARMS	RG7089/180N	MCC162-12io1	212x180x212
MF-W1C213N12RCVTF	213/170 ARMS	RG7089/180N	MCC310-12io1	212x180x212
MF-W1C217F12RCVTF	217/204 ARMS	RG7089/180F	MCC95-12io1B	212x228x212
MF-W1C324F12RCVTF	324/238 ARMS	RG7089/180F	MCC162-12io1	240x228x212
MF-W1C458F12RCVTF	458/336 ARMS	RG7089/180F	MCC310-12io1	240x228x212
MF-W1C490F12RCVTF	490/380 ARMS	RG42080N15/300	MCC310-12io1	134x474x191
MF-W1C643F12RCVTF	643/421 ARMS	RG42080N15/310	MCC500-12io!	134x474x224

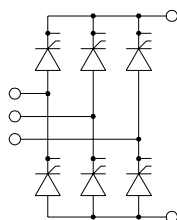
W3C



W3C

TIPO / TYPE	IRMS max / IN	Disipador / Heatsink	Semiconductor	Dimensiones / Sizes
MF-W3C028N12RCVTF	28/19 ARMS	Al. 3 mm.	MCC26-12io1B	244x200x97
MF-W3C036N12RCVTF	36/27 ARMS	RG14071/200N	MCC26-12io1B	244x200x117
MF-W3C058N12RCVTF	58/35 ARMS	RG14071/200N	MCC95-12io1B	244x200x117
MF-W3C076N12RCVTF	76/52 ARMS	RG14229/200N	MCC95-12io1B	244x200x158
MF-W3C159F12RCVTF	159/142 ARMS	RG7089/300F	MCC95-12io1B	212x348x212
MF-W3C208F12RCVTF	208/156 ARMS	RG7089/300F	MCC162-12io1	212x348x212
MF-W3C312F12RCVTF	312/273 ARMS	RG42080N45/300	MCC162-12io1	314x450x189
MF-W3C490F12RCVTF	490/380 ARMS	RG42080N45/300	MCC310-12io1	314x474x191
MF-W3C643F12RCVTF	643/421 ARMS	RG42080N45/310	MCC500-12io!	314x474x224

B6C



B6C

TIPO / TYPE	IDC max / IN	Disipador / Heatsink	Semiconductor	Dimensiones / Sizes
MF-B6C024N12RCVTF	24/15 ADC	Al. 3 mm.	MCC26-12io1B	244x200x97
MF-B6C045N12RCVTF	45/35 ADC	RG14071/200N	MCC26-12io1B	244x200x117
MF-B6C076N12RCVTF	76/48 ADC	RG14071/200N	MCC95-12io1B	244x200x117
MF-B6C099N12RCVTF	99/66 ADC	RG14229/200N	MCC95-12io1B	244x200x158
MF-B6C201F12RCVTF	201/135 ADC	RG7089/300F	MCC95-12io1B	212x348x212
MF-B6C268F12RCVTF	268/180 ADC	RG7089/300F	MCC162-12io1	212x348x212
MF-B6C401F12RCVTF	401/353 ADC	RG42080N45/300	MCC162-12io1	314x450x189
MF-B6C627F12RCVTF	627/492 ADC	RG42080N45/300	MCC310-12io1	314x474x191
MF-B6C841F12RCVTF	841/615 ADC	RG42080N45/310	MCC500-12io!	314x474x224

OTROS TIPOS (BAJO PEDIDO) / OTHER COMBINATIONS ARE POSSIBLE (UNDER REQUEST)

W1H, W3H, B2C, B2HK, B2HZ, B6HK, B2U, B6U.

RECTIFICADORES GUASCH, S.A.

Ciutat de Granada, 80

08005 BARCELONA (SPAIN)

Tel: +34 93 309 88 91 Fax: +34 93 300 18 41

www.e-guasch.com E-mail: info@e-guasch.com

GUASCH COMPONENTES
Y ELECTRONICA
DE POTENCIA